



## **INCWADI YEMIYALELO YE-PAIA**

**Ilungiselelwe ngokuhambelana necandelo 14 loMthetho 2  
ka-2000 Okhuthaza Ukufikelela Kwinkcukacha (njengoko  
uhlonyelwe)**

## IZIQULATHO

|     |  |           |
|-----|--|-----------|
| 1.  | ULUHLU LWEZISHUNQULELO KUNYE NEZIFINYEZO.....  | 3         |
| 2.  | INJONGO YENCWADI YEMIALELO YE-PAIA .....   | 4         |
| 3.  | UKUSEKWA KWE-PPECB .....   | 4         |
| 4.  | UBUME BOLAWULO LWE-PPECB KUNYE NEMISEBENZI YAYO ..... <b>Error! Bookmark not defined.</b>  |           |
| 5.  | IINKCUKACHA ZOQHAGAMSHELWANO EZINGUNDOQO NGENKCUKACHA YASE-PPECB .....   | 7         |
| 6.  | INKCAZELO YONCEDO LONKE OLUFUMANEKAYO MALUNGA NESENZO SE-PPECB OKANYE UKUSILELA KWAYO UKWENZA INTO .....                                   | 8         |
| 7.  | ISIKHOKELO SENDLELA YOKUSEBENZISA I-PAIA KUNYE NENDLELA YOKUFIKELELA KWISIKHOKELO .....  | 8         |
| 8.  | INKCAZELO YEZIHLOKO EKUGCINWE KUZO IINKCUKACHA KUNYE NAMACANDELO ENKCUKACHA AGCINWE YI-PPECB .....   | 10        |
| 9.  | AMACANDELO ENKCUKACHA ZASE-PPECB EZIFUMANEKA NGAPHANDLE KOKUBA UBANI ACELE UKUFIKELELA KUZO .....  | 11        |
| 10. | <b>IINKONZO ZE-PPECB EZIFUMANEKA KUWONKEWONKE KUNYE NENDLELA YOKUFIKELELA KUZO .....</b>   | <b>14</b> |
| 11. | <b>UKUBANDAKANYEKA KUKAWONKEWONKE KUQULUNQO MGAQO-NKQUBO OKANYE EKUSETYENZISWENI KWAMAGUNYA OKANYE EKWENZENI IMISEBENZI YE-PPECB .....</b> | <b>14</b> |
| 12. | UKUSETYENZISWA KWENKCUKACHA YOBUQU .....   | 15        |
| 13. | INKQUBO YOKUCELA .....   | 17        |
| 14. | IINTLAWULO EMISELWEYO .....  | 18        |
| 15. | UKUFUMANEKA KWENCWADI YEMIALELO .....  | 19        |

## 1. ULUHLU LWEZISHUNQULELO KUNYE NEZIFINYEZO

- |      |                      |   |
|------|----------------------|---|
| 1.1  | <b>“APS Act”</b>     | Umthetho 119 ka-1990 Wemigangatho Yemveliso Yezolimo;                                     |
| 1.2  | <b>“CEO”</b>         | Igosa Eliphethe Inkampani   |
| 1.3  | <b>“DIO”</b>         | Isekela Gosa Lenkcukacha;   |
| 1.4  | <b>“IO”</b>          | IGosa Lenkcukacha;  |
| 1.5  | <b>“Umphathiswa”</b> | Umphathiswa Wezobulungisa Neenkonzo Zoluleko  |
| 1.6  | <b>“I-PAIA”</b>      | Umthetho 2 ka-2000 Wokukhuthazwa Kokufikelelwa Kwinkcukacha njengoko Uhlonyelwe;          |
| 1.7  | <b>“I-PFMA”</b>      | Umthetho 1 ka-1999 Ongokulawulwa Kwezimali Zoluntu njengoko Uhlonyelwe;                   |
| 1.8  | <b>“I-POPIA”</b>     | Umthetho 4 ka-2013 Ongokukhuselwa Kwenkcukacha Yobuqu;                                    |
| 1.9  | <b>“I-PPEC Act”</b>  | Umthetho 9 ka-1983 Ongokulawula Imveliso Eyonakalayo Ethunyelwa Ngaphandle;               |
| 1.10 | <b>“I-PPEC Bill”</b> | Umthetho Oqulunqwayo ka-2021 Ongokulawula Ukuthunyelwa Kwemveliso Eyonakalayo Ngaphandle; |
| 1.11 | <b>“PPECB”</b>       | I-Perishable Products Export Control Board;   |
| 1.12 | <b>“Regulator”</b>   | Umlawuli Wenkcukacha.   |

## 2. INJONGO YENCWADI YEMITYALELO YE-PAIA

Le Ncwadi Yemityalelo ye-PAIA iluncedo kuluntu jikelele ukuze

- 2.1 Iujonge iinkcukacha ekusenokwenzeka ukuba sele zifumaneka e-PPECB ngaphandle kokufuneka lufake isicelo esisesikweni;
- 2.2 Luqonde indlela yokufaka isicelo sokufikelela kwinkcukacha yase-PPECB;
- 2.3 Lufikelele kwiinkcukacha zoqhagamshelwano zabantu abafanelekileyo abaza kunceda abantu ngokubanzi ngeenkukacha abafuna ukufikelela kuzo;
- 2.4 Iwazi zonke iindlela zoncendo ezifumaneka e-PPECB malunga nesicelo sokufikelela kwiinkcukacha ngaphambi kokuba luye eziNkundleni okanye kuMlawuli Wenkcukacha.
- 2.5 icacise iinkonzo ze-PPECB ezifumaneka kuluntu ngokubanzi kunye nendlela yokufikelela kwezo nkonzo;
- 2.6 ingcaciso yesikhokelo sendlela yokusebenzisa i-PAIA njengoko ihlaziyiwe nguMlawuli Wenkcazelo kunye nendlela yokufikelela kuyo;
- 2.7 ukuba inkampani iza kusebenzisa inkcukacha yobuqu, injongo yokusetyenziswa kwayo kunye nengcaciso ngamacandelo abanini benkcukacha okanye amacandelo eenkcukacha ezimayela noko;
- 2.8 Iuyazi xa i-PPECB icebe ukuthumela inkcukacha yobuqu ngaphaya kwemida yeRiphabliki yoMzantsi Afrika kunye nabantu abaza kuyifumana okanye amacandelo abantu abangayinikwa loonkcukacha yobuqu; kwakhona
- 2.9 Iwazi ukuba i-PPECB inamanyathelo okhuseleko afanelekileyo ukuze iqinisekise ubumfihlo, ukunyaniseka nokufumaneka kwenkcukacha yobuqu eza kusetyenziswa.

## 3. UKUSEKWA KWE-PPECB

I-PPECB yinkampani karhulumente esekwe ngokweCandelo 3A ngokuhambelana noMthetho 1 ka-1999 we-PFMA kwaye igxile ekuboneleleni icandelo loshishino lweemveliso ezonakalayo ngeenkono zokuhlola, ukhuseleko lokutya kunye neenkono zokugcina izinto zibanda nezomthetho kwaye imiselwe ngokuhambelana noMthetho we-PPEC ibe iphumeza imisebenzi yayo ngokuhambelana noMthetho we-APS.

NgokoMthetho (ochazwe ngasezantsi) nangeenjongo zawo, amagunya anikwe iGosa Elilawulayo lona eliye labela uxanduva oluthile kumaSekela Gosa eNkcazelo ukuze alawule ukuthotyelwa koMthetho 4 ka-2013 Wokukhuselwa Kwenkcazelo Yobuqu (i-POPIA) kunye noMthetho 2 ka-2000 Wokukhuthaza Ukufikelela Kwinkcazelo (i-PAIA) (i-POPIA ne-PAIA kuthiwa zombini "yimiThetho") kunye nazo zonke izicelo zokufumana inkcazelo.

I-PPECB isebenzisa Inkcazelo Yobuqu ngokumayela noMgaqo-nkqubo Wobumfihlo Benkcukacha Yangaphandle, enokufunyanwa ku: <https://ppecb.com/>. Lo Mgaqo-nkqubo ucacisa ukuba yeyiphi Inkcazelo Yobuqu eqokelelwayo ize isetyenziswe yi-PPECB, indlela eqokelelwa, egcinwa, etshatyalaliswa, nesetyenziswa ngayo le nkcazelo.

Le ncwadi yemityalelo kufuneka ifundwe kunye noMgaqo-nkqubo Wobumfihlo Benkcukacha Yangaphandle, uMthetho Wokukhuthaza Ubulungisa 3 ka-2000 kunye ne-POPIA.

Iphapha 4 kwayi 19

Isihloko Soxwebhu: Incwadi Yemityalelo Ye-PAIA

Uhlobo: Yeyomntu Wonke

Uluhlu Lokusasaza: Amaqela Anomdla

Umhla: 26/01/2022



## ***linjongo/Isigunyaziso***

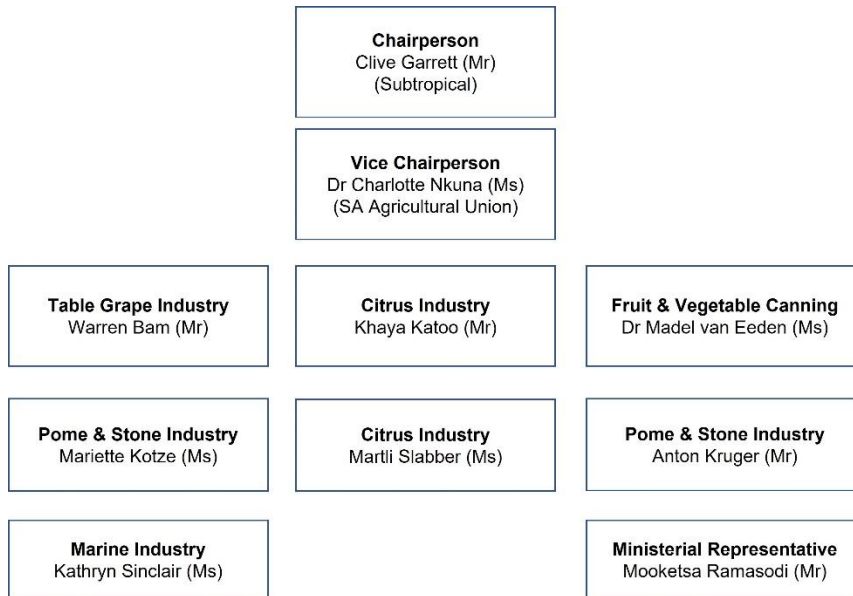
NgokweCandelo 3 loMthetho olawula i-PPEC, injongo ye-PPECB iya kuba kukuzisa ucwangco nokusebenza kakuhle kokuthunyelwa ngaphandle kweemveliso ezonakalayo zisuka eMzantsi Afrika. Lo Mthetho we-PPEC uphanzi kohlaziyo ngoku.

NgokweCandelo 2(3) loMthetho we-APS, i-PPECB yamiselwa njengothunyiweyo liSebe Lezolimo, Utshintsho Kubunini Mhlaba noPhuhliso Lwamaphandle ngo-1991 ukuze inikezele ngeenkonzo zokuhlola kunye nezokhuseleko lokutya.

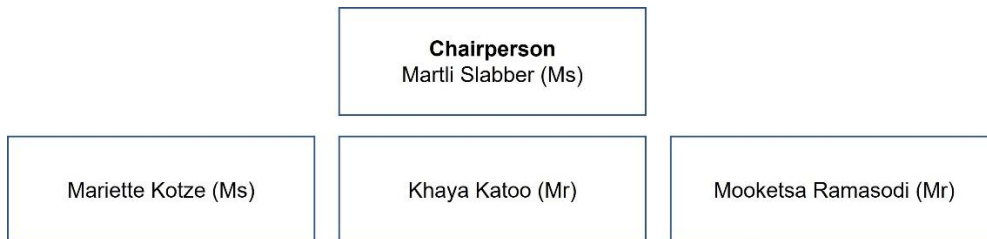
## **4. UBUME BOLAWULO LWE-PPECB KUNYE NEMISEBENZI YAYO**

### **4.1 IBhodi Yolawulo lwe-PPECB Nezinye iiKomiti**

#### **AMALUNGU EBHODI YOLAWULWO LWE-PPECB**



#### **IKOMITI YOPHICOTHO ZINCWADI**



#### **Iphepha 5 kwayi 19**

Isihloko Soxwebhu: Incwadi Yemiyalelo Ye-PAIA

Uhlobo: Yeyomntu Wonke

Uluhlu Lokusasaza: Amaqela Anomdla

Umhla: 26/01/2022

## IKOMITI YEZABASEBENZI



## IKOMITI YABALAWULI (EXCO)



## IKOMITI YOKULAWULA IMINGCIPHEKO (RISCO)



### 4.2 Imisebenzi

- 4.2.1 **I-PPECB kufuneka yenze imisebenzi echazwe kwiCandelo 10 loMthetho we-PPEC.** Sekunjalo, indima edlalwa yi-Perishable Products Export Control Board; (“i-PPECB”) yatshintsha kakhulu ngo-1997 emva kokungena koMthetho wokuThengiswa Kweemveliso Zezolimo ka-1996 (uMthetho 47 ka-1996 kunye nokutshintshiswa kweeBhodi zokuThengisa (indawo yokuthengisa elawulwa ngokusemthethweni) kunye nokutshintshela kwindlela yokuthengisa engalawulwa ngokusemthethweni. Ngenxa yezi nguqu, i-PPECB yatshintsha ukususela ekubeni ngumlawuli nomboneleli nkonzo kwiiBhodi zolawulo apho amaxesha amaninzi isebenza nenkampani enye ethumela iimveliso ngaphandle yaza yenza umsebenzi wokulawula ngokwasemthethweni iinkampani ezithumela iimveliso ngaphaya kwemida kunye nababoneleli beenkonzo. **Umthetho olawula i-PPEC uphelelwe lixesha kwaye uyahlaziywa ngoku njengoko i-PPECB ingasazenzi izinto ezininzi ezichazwe apha ngezantsi.**

1. Ukulawula ukuthunyelwa kwemveliso eyonakalayo ngaphandle ukusuka eMzantsi Afrika kunye noncwangco lothunyelwa mveliso kuwo onke amazibuko;
2. Ukugqiba ukuba zeziphi iinqanawa ezifanelekileyo ukuba zingahambisa iimveliso ezonakalayo kunye nodidi lwendawo eziza kulayishwa kuyo leyo mveliso;
3. Ukucela nokufumana uqikelelo nezinye iinkcukacha zeemveliso ezonakalayo kwabo banenjongo yokuzithumela ngaphaya kwemida yelizwe;
4. Ukucela nokufumana inkcazelo evela kubanini beenqanawa okanye abameli babo malunga nokuba ingakanani indawo efumanekayo kwinqanawa nefanelekileyo ukuba ingasetyenziswa xa kuthunyelwa iimveliso ezonakalayo ngaphandle nokuba kusetyenziswa eyiphi iinqanawa efika ezibukweni laseMzantsi Afrika;
5. Ukubuzisa, ukungena kuthethathethwano kunye nokwenza isivumelwano okanye ukulungiselela ukuba kubekho iindawo emazibukweni nakwiinqanawa ukuze kufakwe kuze kuhanjiswa iimveliso ezonakalayo njengoko ibhodi inokubona kufanelekile;
6. Xa ibhodi ibona kufanelekile, itshintshela iimveliso ezonakalayo ziye kwamanye amazibuko afanelekileyo;
7. Ukwenza uphando malunga nokuhanjiswa kunye neemfuno zendawo zomkhenkce zokugcina iimveliso ezonakalayo kuze kucetyiswe naliphi na isebe likaRhulumente okanye nawuphi na umntu onomdla;
8. Ukucebisa malunga nendlela ezimele ziphathwe ngayo iimveliso ezonakalayo xa zisuka naxa zisiya koololiwe, kwezinye iinqwelo kunye neendawo zomkhenkce ezisetyenziselwa ukugcina;
9. Ukukhuthaza amaxabiso ezothutho afanayo xa kuthunyelwa ngaphaya kwemida iimveliso ezonakalayo kucingelwa iimveliso ezithile ezonakalayo, amazibuko asetyenziswayo xa kuthunyelwa ngaphandle kunye nendlela yokuzithumela;
10. Ukwenza eminye imisebenzi malunga nokuthunyelwa ngaphandle kweemveliso ezonakalayo ukusuka eMzantsi Afrika njengoko uMthetho uyalele.

#### 4.2.2 NgokoMthetho we-APS, i-PPECB kufuneka yenze le misebenzi ilandelayo;

- 4.2.2.1 Ukuhlola iimveliso ezonakalayo ukuze kugqitywe ukuba zithengiswe ngokwezinga eliyalelweyo na;
- 4.2.2.2 Ukuba ngaba iimveliso ezonakalayo zihambelana neemfuno ezisesikweni malunga nomgangatho, izinga okanye inqanaba na;
- 4.2.2.3 Ukuthobela iimfaneleko ezizimfuneko malunga nenkqubo yolawulo, yokulungelelanisa, nokuphawula iimveliso ezonakalayo;

### 5. IINKCUKACHA ZOQHAGAMSHELWANO EZINGUNDOQO NGENKCUKACHA YASE-PPECB

#### IGosa Lenkcukacha Eliyintloko

Igama: Lucien Jansen

Umnx: 021 934 1134

I-imeyile: [LucienJ@ppecb.com](mailto:LucienJ@ppecb.com)

#### Isekela Gosa Lenkcukacha Eliyintloko

Igama: Yanesh Ramiah (CIO)

Umnx: 021 930 1134

I-imeyile: [YaneshR@ppecb.com](mailto:YaneshR@ppecb.com)

#### Iphepha 7 kwayi 19

Isihloko Soxwebhu: Incwadi Yemiyalelo Ye-PAIA

Uhlobo: Yeyomntu Wonke

Uluhlu Lokusasaza: Amaqela Anomdla

Umhla: 26/01/2022



Igama: Nina Pretorius (Business Intelligence Manager)  
Umnx: 021 930 1134  
I-imeyile: [NinaP@ppecb.com](mailto:NinaP@ppecb.com)

#### 5.1 Aboqhagamshelwano ngokubanzi ngokufikelela kwinkcukacha

I-imeyile: I-Legal & Corporate Governance Unit ku [MichelleA@ppecb.com](mailto:MichelleA@ppecb.com) okanye [JanaVbs@ppecb.com](mailto:JanaVbs@ppecb.com)

#### 5.2 Uzwelonke/ikomkhulu

Idilesi Yeposi: P O Box 15289, Panorama, 7506  
Idilesi Yendawo: 45 Silwerboom Avenue, Platteklouf, Cape Town, 7500  
Inombolo Yomnxeba: 021 930 1134  
I-imeyile: Sebenzisa ifomu ethi Get in Touch eku [www.ppecb.com](http://www.ppecb.com)  
Iwebhusaythi [www.ppecb.com](http://www.ppecb.com)

### 6. INKCAZELO YALO LONKE UNCEDO OLUFUMANEKAYO MALUNGA NESENZO SE-PPECB OKANYE UKUSILELA KWAYO UKWENZA INTO

- 6.1 Isibheni sangaphakathi singafakwa kwifomu emele isetyenziswe zingaphelanga iintsuku ezingama-60 okanye iintsuku ezingama-30 emva kokuba umbheni efumene isaziso esinxamnye naye, ukuba isaziso kufuneka sinikwe iqela langaphandle njengoko kufunwa liCandelo 49(1)(b) okanye i-PAIA.
- 6.2 Umfaki sicelo angafaka isikhalazo kuMlawuli Wenkcazelo ngendlela ekufuneka ifakwe ngayo nangefomu ekufuneka isetyenzisiwe zingaphelanga iintsuku ezingama-180 emva kokuba kwenziwe isigqibo, kodwa kuphela yakuba inkqubo yangaphakathi yesibheni ilandelwe ngokupheleleyo.
- 6.3 Ukufaka isicelo kwinkundla efanelekileyo ukuze kufunyanwe umyalelo wayo zingaphelanga iintsuku ezingama-180.

### 7. ISIKHOKELO SENDLELA YOKUSEBENZISA I-PAIA KUNYE NENDLELA YOKUFIKELELA KWISIKHOKELO

- 7.1 Ngokuvisisana necandelo 10(1) le-PAIA, uMlawuli Wenkcazelo uye wahlaziya waza wenza iSikhokelo esihlaziyiweyo sendlela yokusebenzisa i-PAIA ("iSikhokelo") ukuze siqondakale kuye nabani na onokufuna ukusebenzisa naliphi na ilungelo elikumthetho we-PAIA kunye nakwi-POPIA.
- 7.2 Isikhokelo sifumaneka ngazo zonke iilwimi ezisemthethweni.
- 7.3 Esi Sikhokelo sichazwe ngasentla siqulethe ingcaciso
- i. yenjongo ye-PAIA neye-POPIA;
  - ii. idilesi yeposi, idilesi yendawo, inombolo yefeksi neyomnxeba kwaye ukuba iyafumaneka, idilesi ye-imeyile-



1. yeGosa leNkcazelo yazo zonke iinkampani zikarhulumente kunye
  2. neyeSekela Gosa Lenkcazelo lazo zonke iinkampani zikarhulumente okanye zangasese ngokwecandelo 17(1) le-PAIA<sup>1</sup> kunye necandelo 56 le-POPIA<sup>2</sup>;
- iii. indlela nefomu yesicelo
1. sokufikelela kwingxelo yenkampani karhulumente njengoko kubonelelwa kwicandelo 11<sup>3</sup>; kwaye
  2. ukufikelela kwingxelo yenkampani yabucala kuthethwa ngayo kwicandelo 50<sup>4</sup>;
- iv. uncedo olufumaneka kwiGosa Lenkcazelo lenkampani karhulumente ngokumayela ne-PAIA ne-POPIA;
- v. uncedo olufumaneka kuMlawuli Wenkcazelo ngokumayela ne-PAIA ne-POPIA;
- vi. zonke iindlela zoncedo ngokwasemthethweni ezifumaneka malunga nesenzo okanye ukusilela ukwenza into ngokunxulumene nelungelo okanye uxanduva olubekwe yi-PAIA kunye ne-POPIA kuquka indlela yokufaka-
1. isibheni sangaphakathi;
  2. isikhalazo esifakwa kuMlawuli Wenkcazelo; kunye
  3. Nesicelo esifakwa enkundleni nxaanye nesigqibo segosa lenkcazelo elikwinkampani karhulumente, isigqibo sesibheni sangaphakathi okanye isigqibo soMlawuli Wenkcazelo okanye isigqibo sentloko yenkampani yabucala;
- vii. izibonelelo zecandelo 14<sup>5</sup> nelama 51<sup>6</sup> ezifuna ukuba inkampani karhulumente neyabucala ngokulinganayo zimele zibhale incwadi kunye nendlela yokufikelela kuloo ncwadi;

<sup>1</sup> Icandelo 17(1) le-PAIA- *Ukuze kuphunyezwe iinjongo ze-PAIA, inkampani nganye karhulumente imele imisele inani labantu abaza kuba ngamasekela gosa enkcazelo abayimfuneko ukuze abantu abafaka izicelo zengxelo yazo bakwazi ukufikelela kuyo kangangoko kusengqiqweni kwenziwe oko kuhambisana nomthetho olawula ukuqeshwa kwabasebenzi baloo nkampani*

<sup>2</sup> Icandelo 56(a) le-POPIA- *Nayiphi na inkampani karhulumente okanye eyabucala imele yenze isibonelelo sokubakho kwabantu, ukuba bakhona abaza kuba ngamasekela gosa enkcazelo njengoko kuyimfuneko ukuze kwenziwe imisebenzi echazwe kwicandelo 55(1) le-POPIA kusenziwa oko ngendlela echazwe kwicandelo 17 loMthetho Okhuthaza Ukufikelela Kwinkcazelo.*

<sup>3</sup> Icandelo 11(1) le-PAIA- *Umntu ofaka isicelo umele avunyelwe afikelele kwingxelo yenkampani karhulumente ukuba isicelo sakhe sihambiselana neemfaneleko zomgaqo okwi-PAIA malunga nesicelo sokufikelela kuloo ngxelo kwaye ukufikelela kuloo ngxelo akwalelwa nokuba kungasiphi na isizathu sokwala ngaphandle kwesichazwe kwiSahluko sesi-4 sale Nxalenye.*

<sup>4</sup> Icandelo 50(1) le-PAIA- *Umntu ofaka isicelo kufuneka akwazi ukufikelela kuyo nayiphi na ingxelo yenkampani yabucala ukuba-*

- a) loo ngxelo iyafuneka ukuze kusetyenziswe okanye kukhuselwe nawaphi na amalungelo;
- b) loo mntu uyahambisana neemfaneleko zomgaqo-nkqubo we-PAIA malunga nesicelo sokufikelela kuloo ngxelo; kwaye
- c) ukufikelela kuloo ngxelo akwalelwa ngenxa yaso nasiphi na isizathu njengoko kuchazwe kwiSahluko sesi-4 sale Nxalenye.

<sup>5</sup> Icandelo 14(1) le-PAIA- *Igosa lenkcazelo elikwinkampani karhulumente limele lenze kufumaneka incwadi equlethe inkcazelo ekwisiqendu 4 ngasentla, ngeelwimi ezintathu ezisemthethweni ubuncinane.*

<sup>6</sup> Icandelo 51(1) le-PAIA- *Intloko yenkampani yabucala imele yenze kufumaneka incwadi equlethe inkcazelo ekwisiqendu 4 ngasentla.*

## **Iphepha 9** kwayi **19**

Isihloko Soxwebhu: Incwadi Yemiyalelo Ye-PAIA

Uhlobo: Yeyomntu Wonke

Uluhlu Lokusasaza: Amaqela Anomdla

Umhla: 26/01/2022



- viii. izibonelelo zecandelo 15<sup>7</sup> nelama 52<sup>8</sup> zibonelela ngeekhathegori zokudiza iingxelo ngokuzithandela okwenziwa ziinkampani zikarhulumente nezabucala ngokulinganayo;
- ix. izaziso ezikhutshwa ngokuvumelana necandelo 22<sup>9</sup> nelama 54<sup>10</sup> ngokumayela nemali emele ibhatalwe ngezicelo zokufikelela kwinkcazelo; kwaye
- x. Imithetho eyenziwe phantsi kwecandelo 92<sup>11</sup>.

7.4 Amalungu oluntu jikelele angahlola okanye enze iikopi zesi Sikhokelo kwiiofisi zeenkampani zikarhulumente okanye zeenkampani zabucala kuquka iofisi yoMlawuli Wenkcazelo ngexesha lomsebenzi eliqhelekileyo. Isikhokelo singafunyanwa-

- i. xa sicelelwa kwiGosa Lenkcazelo
- ii. kwiwebhusaythi yoMlawuli Wenkcazelo (<https://www.justice.gov.za/infoecg/>).

## 8. IINGCACISO YEZIHLOKO EKUGCINWE IINGXELO ZAZO KUNYE NAMACANDELOENGXELO EGCINWE YI-PPECB

| Izihloko ekugcinwe ingxelo yazo                              | Amacandelo engxelo kwisihloko ngasinye  |
|--|---|
| Amaxwebhu Ezcwangciso Cebo, Izicwangciso, Izinto Ezicetywayo | Iingxelo Zonyaka, Iplani Yesicwangciso, Iplani Yendlela Yokusebenza Yonyaka   |
| Abasebenzi   | <ul style="list-style-type: none"> <li>- Imigaqo-nkqubo ye-HR;</li> <li>- Imisebenzi ebhengeziweyo;</li> <li>- Iingxelo zabasebenzi</li> <li>- Ukufunda nophuhliso umz. uphuhliso lwezakhono kunye nezicwangciso zokuqeqesha</li> <li>- Isicwangciso sokulingana kwezengqesho kunye nobalo manani</li> <li>- Inkcazelo yobuqu enikezelwe ngabasebenzi;</li> <li>- Inkcazelo enikezelwe ngamaqela angaphandle mayela nabasebenzi;</li> <li>- Imiqathango yengqesho kunye nezivumelwano ezinxulumene nabasebenzi;</li> <li>- Iingxelo zohlolo lwangaphakathi kunye nezinye iingxelo;</li> <li>- Imbalelwano enxulumene nabasebenzi;</li> <li>- Izicwangciso zoqeqesho kunye nezixhobo;</li> </ul> |

<sup>7</sup> Icandelo 15(1) le-PAIA- Igosa lenkcazelo lenkampani karhulumente limele lenze kufumaneke ngendlela ecetyiswayo ingcaciso yeekhathegori zengxelo zenkampani karhulumente ezifumaneka ngokuzenzekelayo kungafakwanga sicelo sokuzifumana.

<sup>8</sup> Icandelo 52(1) le-PAIA- Intloko yenkampani yabucala imele yenze kufumaneke ngendlela ecetyiswayo ingcaciso yeekhathegori zengxelo zenkampani yabucala ezifumaneka ngokuzenzekelayo kungafakwanga sicelo sokuzifumana.

<sup>9</sup> Icandelo 22(1) le-PAIA- Ngaphambi kokuprosesa isicelo sokufikelela inkcazelo, igosa lenkcazelo lenkampani karhulumente ekuthunyelwe kuyo isicelo, limele likhuphe isaziso esichazela umfaki iscelo ukuba abhatalwe imali ethile (ukuba ikhona).

<sup>10</sup> Icandelo 54(1) le-PAIA- Ngaphambi kokuprosesa isicelo sokufikelela inkcazelo, intloko yenkampani yabucala ekuthunyelwe kuyo isicelo, imele ikhuphe isaziso esichazela umfaki iscelo ukuba abhatalwe imali ethile (ukuba ikhona).

<sup>11</sup> Icandelo 92(1) le-PAIA libonelela ngokuba –“UMphathiswa angakhupha isaziso kwiGazethi malunga nomthetho omayela-  
 (a) nawuphi na umbandela oyimfuneko okanye ekuvumeleke ukuba loMthetho uthi mawenziwe;  
 (b) nawuphi na umbandela malunga nemali emele ibhatalwe njengoko kuchazwe kwicandelo 22 nelama 54;  
 (c) nasiphi na isaziso esifunekayo ngokwaloMthetho;  
 (d) iimfaneleko ezifanayo zimele zisetyenziswe ligosa lenkcazelo elikwinkampani karhulumente xa kugqitywa ngokuba zeziphi iikhathegori zengxelo ekuza kwenziwa zifumaneke ngokuhambelana necandelo 15; kunye  
 (e) nawuphi na umbandela wolawulo okanye womgaqo-nkqubo oyimfuneko ukuze kuphunyezwe izibonelelo zalo Mthetho.”

### Iphepha 10 kwayi 19

Isihloko Soxwebhu: Incwadi Yemiyalelo Ye-PAIA

Uhlobo: Yeyomntu Wonke

Uluhlu Lokusasaza: Amaqela Anomdla

Umhla: 26/01/2022



| Izihloko ekugcinwe ingxelo yazo  | Amacandelo engxelo kwisihloko ngasinye  |
|--|---|
|  | <ul style="list-style-type: none"> <li>- Ingxelo zoqeqesho;</li> <li>- lingxelo zemivuzo;</li> <li>- lingxelo ezahlukahlukeneyo malunga nekhefu/</li> </ul>   |
| Inkcazelo Yamaqela Anomdla "Iqela Elinomdla" liquka nawuphi umntu wokwemvelo okanye inkampani esekwe ngokusemthethweni efumana iinkonzo ze-PPECB.  | <ul style="list-style-type: none"> <li>- Nayiphi na inkcazelo efunyenwe yi-PPECB ivela kwiqela elinomdla;</li> <li>- Nayiphi na inkcazelo enikezelwe liqela elinomdla kwiqela langaphandle egameni le-PPECB;</li> <li>- lingxelo ezenziwe okanye zangaphakathi e-PPECB malunga neqela elinomdla kuquka iinxelo zentengiselwano.</li> </ul>  |
| lingxelo zase-PPECB  | <ul style="list-style-type: none"> <li>- lingxelo zezimali;</li> <li>- lingxelo zokusebenza;</li> <li>- lidathabheysi kunye neteknoloji;</li> <li>- lingxelo zonzibelelwano;</li> <li>- Imbalelwano yangaphakathi;</li> <li>- lingxelo ezimalunga neenkono;</li> <li>- lingxelo zomthetho;</li> <li>- Imigaqo-nkqubo yangaphakathi;</li> <li>- lingxelo ezigcinwa ngamagosa e-PPECB.</li> </ul>   |
| lingxelo ezimalunga namanye amaqela Kungenza i-PPECB ibe neengxelo ezimayela namanye amaqela kuquka (kodwa kungaphelelanga) oonokhontrakha, ababoneleli beenkonzo. Kwelinye icala, kusenokwenzeka ukuba loo maqela aneengxelo ekunokuthiwa zezase-PPECB. | <ul style="list-style-type: none"> <li>- lingxelo zabasebenzi, ezabathengi okanye ezase-PPECB ezigcinwe lelinye iqela endaweni yokube zibe selugcinweni lwe-PPECB;</li> <li>- lingxelo ezigcinwe yi-PPECB malunga namanye amaqela, kuquka (kodwa kungaphelelanga) inkcazelo yobuqu, iingxelo zezimali, imbalelwano, iingxelo zezivumelwano, iingxelo ezibonelelwa ngamanye amaqela kunye neengxelo ezibonelelwe ngamaqela angaphandle malunga ngoonokhontrakha kunye okanye ababoneleli.</li> </ul> |

## 9. IIKHATHEGORI ZEENGXELO ZASE-PPECB EZIFUMANEKA NGAPHANDLE KOKUCELA UKUFIKELELA KUZO

| Icandelo          | Uhlobo Loxwebhu   | Lufumaneka Kwiwebhus aythi | Lufumaneka xa icelwa |
|-------------------|---|----------------------------|----------------------|
| Uxwebhu lwethenda | <ul style="list-style-type: none"> <li>- lithenda esele zabiwe</li> <li>- lithenda Ezisalinde Ukwabiwa</li> <li>- lithenda Ezifunyenweyo</li> <li>- Isicwangciso Sokuthenga</li> </ul>      | X                          |                      |
| Umthetho          | <ul style="list-style-type: none"> <li>- Imbalelwano malunga neziKhokelo Zokunyanzelisa i-AgriBEE</li> <li>- Imirhumo ka-2021</li> <li>- Ipolisi Yobumfihlo Yedatha Yangaphandle</li> </ul> | X                          |                      |

### Iphepha 11 kwayi 19

Isihloko Soxwebhu: Incwadi Yemiyalelo Ye-PAIA

Uhlobo: Yeyomntu Wonke

Uluhlu Lokusasaza: Amaqela Anomdla

Umhla: 26/01/2022



| Icandelo  | Uhlobo Loxwebhu   | Lufumaneka Kwiwebhus aythi | Lufumaneka xa icelwa |
|---|---|----------------------------|----------------------|
|   | <ul style="list-style-type: none"> <li>- Ipolisi Yobumfihlo Yedatha Yewebhusaythi</li> <li>- Imimiselo Yokusebenzisa Iwebhusaythi</li> <li>- Ukwalela Ukuproseswa kweNkcazelo Yobuqu</li> <li>- Isicelo Sokulungiswa okanye Sokucinywa Kwenkcazelo Yobuqu</li> <li>- Incwadi YE-PAIA</li> <li>- Isicelo Sokufikelela Kwiingxelo Zenkampani kaRhulumente</li> <li>- Umthetho Wemilingaiselo Yeemveliso Zezolimo (Umthetho we-APS)</li> <li>- Umthetho Oqulunqwayo ka-2016 Ongokulawula Ukuthunyelwa Kweemveliso Ezonakalayo</li> <li>- Iprizenteyishini Yothethwano Noluntu Jikelele Ngomthetho Oqulunqwayo we-PPEC 30 Meyi - 2 Juni 2016</li> <li>- Ingxelo yonyaka ngokuhambiselana ne-King IV</li> <li>- Indlela Yokuziphatha</li> <li>- Isetifikethi se-BBB-EE</li> <li>- Inkcazelo Yomnxeba Wokuziphatha Okuyinqobo- Indlela yokuxela ukungaziphathi ngokweenqobo zokuziphatha</li> </ul> |                            |                      |
| Amaxwebhu Ezicwangciso Cebo (Izicwangciso Nengxelo) | <ul style="list-style-type: none"> <li>- Inkcazelo Yenkampani (Isihwankathelo, linjongo, Imisebenzi)</li> <li>- Ingxelo Zonyaka;</li> <li>- Iplani Yesicwangciso;</li> <li>- Ingxelo Yokusebenza Kwenkampani;</li> </ul>  | X                          |                      |
| Amaxwebhu Ezimali                                   | <ul style="list-style-type: none"> <li>- Ifomu Yokubhalisa Umthengi</li> <li>- Imimiselo Nemiqathango Yokurhweba</li> </ul>   | X                          |                      |
| Inkcazelo Ngekhoro                                  | <ul style="list-style-type: none"> <li>- Unxibelelwano</li> <li>- Ividiyo</li> <li>- Inkcazelo Nezikhokelo</li> </ul>   | X                          |                      |
| Imisebenzi  | <ul style="list-style-type: none"> <li>- Ukubandiswa Kwezinto Ezithunyelwayo</li> <li>- Inkcazelo Gabalala</li> <li>- Iiprotokholi Zokuphatha Izinto Eziseluhambeni e-Afrika, e-Asia, Kwimpuma Asia, kuMbindi Mpuma,</li> </ul>   | X                          |                      |

**Iphepha 12 kwayi 19**

Isihloko Soxwebhu: Incwadi Yemiyalelo Ye-PAIA

Uhlobo: Yeyomntu Wonke

Uluhlu Lokusasaza: Amaqela Anomdla

Umhla: 26/01/2022

| Icandelo           | Uhlobo Loxwebhu  | Lufumaneka Kwiwebhus aythi | Lufumaneka xa icelwa |
|--------------------|--|----------------------------|----------------------|
|                    | <p>eMntla Melika, eMzantsi Asia, e-USA.</p> <p>Inkqubo ye-False Codling Moth Management System -Imibuzo Edla Ngokubuzwa</p> <p>Izinto Eziqhelekileyo Ezithunyelwayo</p> <ul style="list-style-type: none"> <li>- Imigaqo yokuphatha izinto</li> <li>- Imigaqo Yokuphatha izinto Ecetyiswayo</li> </ul> <p>Iiprizenyishini Ezenziwa Ngaphambi Kokuqalisa Kwesizini</p> <p>EThekwini<br/>EKapa<br/>EGqeberha</p> <p>Amagama Asetyenziswa Kudityaniso Lweenkqubo</p> <p>TITAN 2.0®<br/>Amaxwebhu<br/>Ubalo-manani<br/>Iincwadi Zokuqeqesha</p> <p>Iinkonzo Ezinesetifikethi sakwa-SAMSA</p> <ul style="list-style-type: none"> <li>- Imibuzo Edla Ngokubuzwa</li> <li>- Isicelo Sokuhlalelwa i-VGM, Iindleko Nokhetho Lokubhatala, Uluhlu Lwezinto Ezijongwayo</li> <li>- Iphepha Labantu Ekuqhagamshelwana nabo Ngabathengi</li> <li>- Izikhokelo Zecandelo Lokuthumela Iziquhamo</li> <li>- Isaziso 19 sika-2016 se-South African Maritime Safety Authority</li> <li>- Isaziso 18 sika-2016 se-South African Maritime Safety Authority</li> </ul> <p>I-Manual Inspection Solution (MIS)</p> <ul style="list-style-type: none"> <li>- Inkcazelo ye-MIS Neziphumo</li> <li>- Incwadi Yokubhalisa Amaqela Angaphandle kwi-MIS</li> </ul> |                            |                      |
| Inkcazelo Gabalala | <ul style="list-style-type: none"> <li>- Imbali ye-PPECB</li> <li>- Ividiyo</li> </ul>   |                            |                      |

**Iphepha 13 kwayi 19**

Isihloko Soxwebhu: Incwadi Yemiyalelo Ye-PAIA

Uhlobo: Yeyomntu Wonke

Uluhlu Lokusasaza: Amaqela Anomdla

Umhla: 26/01/2022

| Icandelo            | Uhlobo Loxwebhu   | Lufumaneka Kwiwebhus aythi | Lufumaneka xa icelwa |
|---------------------|---|----------------------------|----------------------|
| Ulawulo Lomgangatho | <ul style="list-style-type: none"> <li>- Isiqinisekiso se-ISO 9001:2015</li> <li>- Umgaqo-nkqubo Womgangatho wase-PPECB</li> <li>- Okuqukiweyo Kulawulo Lomgangatho wase-PPECB</li> </ul> |                            |                      |

## 10. IINKONZO ZASE-PPECB EZIFUMANEKA KULUNTU NGOKUBANZI KUNYE NENDLELA YOKUZIFIKELELA

### 10.1 Amagunya nomsebenzi

I-Perishable Products Export Control Board ngumboneleli ozimeleyo weenkono zokuqinisekisa umgangatho, iinkono zokuqinisekisa kunye nolawulwo lweendawo ezibandisayo kubavelisi nakwabo bathumela iimveliso zokutya ezonakalayo. Njengoko iyinkampani karhulumente, i-PPECB isekwe kwaye imiselwe ngokumayela noMthetho we-Perishable Products Export Control 9 ka-1983 ukuba ibonelele ngeenkono zeendawo ezibandisayo. I-PPECB ikwabonelela ngeenkono zokuhlola ukhuseleko lokutya neziniqwe liSebe Lezolimo, Utshintsho Kubumnini Bomhlaba Nophuhliso Lwamaphandle (DALRRD) ngaphantsi koMthetho we-APS 119 ka-1990. Kunokufikelelwa kwezi nkono ngewebhusaythi yethu: <http://www.ppecb.com>.

## 11. UKUBANDAKANYEKA KOLUNTU NGOKUBANZI XA KUQULUNQWA UMGAQO-NKQUBO OKANYE XA KUSETYENZISWA AMAGUNYA OKANYE KUSENZIWA IMISEBENZI YASE-PPECB

Ngokumayela nokubandakanyeka kwimisebenzi yemihla ngaemihla ye-PPECB, kufuneka uluntu ngokubanzi luqoke ukubandakanyeka ekuvelisweni nasekupakishweni kweemveliso ezonakalayo kunye/okanye iimveliso ezenziwe ngazo ukuze zithunyelwe ngaphandle, ababoneleli beenkono zothutho (kuquka iindawo zokugcina ezibandisayo) kunye nabathumeli ngaphandle. Abo bavelisayo nabathumela ngaphandle banamaqela asekiweyo angamaqela anomdla ibe la maqela anyula umntu onokumiselwa nguMphathiswa ukuba abe lilungu leBhodi yolawulo yase-PPECB. Oku kumelwa kwabezoshishino (uluntu ngokubanzi) kwiBhodi yolawulo yase-PPECB kuvumela ukubandakanyeka ngqo kwabantu abanolwazi nabangamaqela anomdla afanelekileyo. Ukongezelela koku, i-PPECB inekomiti okanye iiforam ezithetha namaqela anomdla ngemiba enokuthathanani naloo maqela kunye nokumisela iimfaneleko. I-PPECB inewebhusaythi ehlaziywa ngokuqhubekayo nevumela ukuba amagunya nezinto ezenziwa yi-PPECB zibonakale phandle ukuze uluntu ngokubanzi lukwazi ukubandakanyeka. Igosa Eliphethe Inkampani liya kwiintlanganiso ezibanjwa kunye namaqela anomdla kwicandelo loshishino lweemveliso ezonakalayo enoba kungokuthe ngqo okanye ngokunxulumana. Ngenxa yokuba kukho uMthetho ocetywayo, iBhodi iye yathethana ngqo noluntu ngokubanzi ikwenza oko ngezibhengezo kunye neentlanganiso zoluntu ebezikumaphondo/amaziko ama-4 achaphazelekayo. Kuye kwafunyanwa izimvo ezibhaliweyo nezithethwe luluntu jikelele kwaye ziquke amaqela oshishino anomdla ibe ziye zathathelwa engqalelweni.

Public Ukubandakanyeka koluntu ngokubanzi xa kuqulunqwa umgaqo-nkqubo okanye xa kusenziwa umsebenzi kukwaququzelelwayi-;

1. Ukuthatha inxanxehba kuphando zimvo lwamaQela Anomdla e-PPECB;

### Iphepha 14 kwayi 19

Isihloko Soxwebhu: Incwadi Yemiyalelo Ye-PAIA

Uhlobo: Yeyomntu Wonke

Uluhlu Lokusasaza: Amaqela Anomdla

Umhla: 26/01/2022



2. Ukugcwalisa nokufaka iFomu Q 67, apho amaqela anomdla ehlola indlela esebenze kakuhle ngayo i-PPECB;
3. I-PPECB iya kwiintlanganiso zeKomiti yasePalamente apho ifumana ingxelo malunga nokuqulunqwa komgaqo-nkqubo okanye ukusebenzisa amagunya okanye ukwenza imisebenzi yayo.

## 12. UKUSETYENZISWA KWENKCAZELO YOBUQU

### 12.1 Injongo yokusetyenziswa kwayo

1. Ukuze kuhlolwe izicelo zengqesho nokulawula zonke izinto ezibandakanyaingqesho;
2. Ukuququzelela ukumiselwa kwamalungu eBhodi yolawulo lwe-PPECB;
3. Ukuthintela nokubona ulwaphulo-mthetho;
4. Ukukhusela impilo nokhuseleko lwabathengi, ababoneleli beenkonzo, abasebenzi kunye nempahla yabo;
5. Ukuze kukwazi ukufikelela kwii-ofisi zase-PPECB kunye nokuzibeka esweni;
6. Ukuze kuqinisekiswa ukuba bangobani ababoneleli beenkonzo, abaxhasi, nabathengi kuze kulawulwe ukungquzulana kwemidla;
7. Ukuze siphumeze izibophelelo zethu kwisivumelwano esisenze nawe;
8. Ukuze kubonelelwe okanye kufunyanwe iinkonzo;
9. Ukuze kuthunyelwe izaziso nenkcazelo malunga nesivumelwano kunye okanye amanyathelo ezomthetho athatyathwayo;
10. Ukuthumela intengiso apho kukho isivumelwano sokwenza njalo;
11. Ukukunika iinkonzo okanye ukuzinika inkampani yakho;
12. Ukuthobela imithetho esebenzayo;
13. Kwaye njengoko kuthethwa ngokuthe gabalala kwiPolisi Yobumfihlo Yedatha Yangaphandle, enokufunyanwa <https://ppecb.com/>.

### 12.2 Ingcaciso yamacandelo ezingabaNini Datha kunyenenkcazelo okanye amacandelo amayela nabo

| Amacandelo abaNini Datha   | Inkcazelo Yobuqu enokuProseswa  |
|----------------------------|---|
| Abantu                     | Igama nefani; iinkcukacha zoqhagamshelwano (iinombolo zoqhagamshelwano, inombolo yefeksi, idilesi ye-imeyili); Idilesi yeposi, yendawo yokuhlala okanye yeshishini; Inombolo Ekhethekileyo Yesazisi/Inombolo Yesazisi kunye nembalelwano eyimfihlo  |
| Iinkampani Ezisemthethweni | Amagama abantu ekuqhagamshelwana nabo; Igama lenkampani; idilesi yendawo ekuyo kunye nedilesi yeposi; iinkcukacha zoqhagamshelwano (iinombolo zoqhagamshelwano, inombolo yefeksi, idilesi ye-imeyili); inombolo yobhaliso; inkcazelo yezimali, yezorhwebo, yenzululwazi okanye yezakhono kunye neemfihlo zorhwebo               |
| Abasebenzi                 | Isini, ukukhulelwa, ubume bokutshata; Ibala, iminyaka, ulwimi, inkcazelo yezemfundo; inkcazelo yezimali, imbali yengqesho; Inombolo yesazisi; idilesi yeposi yendawo yokuhlala; iinkcukacha zoqhagamshelwano (iinombolo zoqhagamshelwano, inombolo yefeksi, idilesi ye-imeyili); ingxelo ngolwaphulo-mthetho; impilo-ntle kunye |

#### Iphepha 15 kwayi 19

Isihloko Soxwebhu: Incwadi Yemiyalelo Ye-PAIA

Uhlobo: Yeyomntu Wonke

Uluhlu Lokusasaza: Amaqela Anomdla

Umhla: 26/01/2022





| <b>Amacandelo abaNini Datha</b> | <b>Inkcazelo Yobuqu enokuProseswa</b>   |
|---------------------------------|---|
|                                 | nezalamane zabo (amalungu osapho), ibala, ezempilo, isini, imvelaphi yelizwe, uhlanga okanye imvelaphi ngokwentlanga, isini othandana naso, iminyaka, impilo yomzimba okanye yengqondo, impilo-ntle, ukukhubazeka, unqulo, isazela, inkolelo, inkcubeko, ulwimi, inkcazelo ngeminwe yesandla saloo mntu |

### 12.3 Abantu abafumana okanye amacandelo abantu abanokunikwa inkc yobuqu

| <b>Ikhathegori yenkcazelo yobuqu</b>  | <b>Abafumani okanye likhathegori Zabafumana Inkcazelo</b>  |
|---|--|
| Inombolo yesazisi kunye namagama ukuze kujongwe imbali yolwaphulo-mthetho   | INkonzo YesiPolisa YaseMzantsi Afrika<br>ISEbe Lezolimo, Utshintsho Kubumnini-mhlaba<br>Nophuhliso Lwamaphandle                                      |
| Inombolo yesazisi soMalathisi/ilungu leBhodi yolawulo/ inkcazelo yokubhaliswa kweNkampani, inkcazelo yoqhagamshelwano | Inkampani Eqinisekisa i-B-BBEE   |
| Ukuqinisekisa iimpepha zokufaneleka   | I-South African Qualifications Authority<br>Inkampani Eqinisekisa i-BBB-EE<br>ISEbe Lezolimo, Utshintsho Kubumnini-mhlaba<br>Nophuhliso Lwamaphandle |
| Iinombolo zesazisi Zababoneleli Nkonzo/zabasebenzi.   | Ii-Credit Buereau<br>Inkampani Eqinisekisa i-B-BBEE  |
| Inkcazelo Yabantu Neyenkampani (Abathengi)  | ISEbe Lezolimo, Utshintsho Kubumnini-mhlaba<br>Nophuhliso Lwamaphandle<br>Imibutho Yezoshishino  |

### 12.4 Ukuceba ukuthumela inkcazelo yobuqu ngaphaya kwemida

Inkcazelo yobuqu inokugcinwa;

12.4.1 Kwiseva Ekwi-Intanethi eyenzelwe i-PPECB enoba iseMzantsi Afrika/USA kunye/okanyeosted in South Africa/USA and/or

12.4.2 Kwiseva Ekwi-Intanethi Esetyenziswa Nazezinye linkampani enoba iseMzantsi Afrika/eNtshona Yurophu/e-European Union/ eVirgini, USA.

### 12.5 Ingcaciso Gabalala Ngamanyathelo Okukhusela Inkcazelo asetyenziswa liqela elinoxanduva ukuze liqinisekise ubumfihlo, ukunyaniseka nokufumaneka kwenkcazelo

1. Inkqubo yokufaka izinto eziphuculiweyo ku-Windows, kwiiseva nakwiikhompyutha,
2. I-Antivirus,
3. Ii-Firewall
4. Ukulawula iiphaswrdi
5. Ukuskena qho ngenyanga ukuzo kujongwe apho ibuthathaka khonainethiwekhi

#### Iphepha 16 kwayi 19

Isihloko Soxwebhu: Incwadi Yemiyalelo Ye-PAIA

Uhlobo: Yeyomntu Wonke

Uluhlu Lokusasaza: Amaqela Anomdla

Umhla: 26/01/2022





### 13. INKQUBO YOKUCELA

Umntu ofuna ukufikelela kwiingxelo zase-PPECB umele agcwalise ifomu efanelekileyo. Le fomu yesicelo ifumaneka kwiGosa leNkcazelo okanye ku: <http://www.ppecb.com/> okanye ku: <http://www.doj.gov.za/>. Ifomu ifuna umntu ofaka isicelo afake le nkcazelo ilandelayo:

- Inkcazelo eyaneleyo ukuze iGosa leNkcazelo lazi ukuba ngubani ofaka isicelo;
- Inkcazelo eyaneleyo ukuze iGosa leNkcazelo lazi ukuba zeziphi iingxelo ezifunwayo;
- Uhlobo lokufikelela olucelwayo;
- Idilesi yeposi nenombolo yefeksi yomfaki sicelo;
- Ukuchaza ukuba lelaphi ilungelo elisetyenziswayo okanye elikhuselwayo;
- Ingcaciso malunga nengxelo ethile efunwayo ukuze kusetyenziswe okanye kukhuselwe ilungelo;
- Indlela afuna ukwaziswa ngayo umfaki sicelo malunga nesigqibo esiphathelele isicelo sakhe;
- Ukuba isicelo sifakwa egameni lomntu, kufakwe ubungqina bokuba kutheni umfaki sicelo engummeli waloo mntu ibe bumele banelise iGosa leNkcazelo.

Abafaki zicelo bamele baphawule ukuba yonke inkcazelo ekwifomu yesicelo imelwe inikezelwe ukuya kutsho kwinqanaba elanelisa iGosa leNkcazelo, kungenjalo inkqubo yesicelo iza kulibaziseka de iphelele inkcazelo.

Amaxesha abekwe nguMthetho awazukuqalisa ukubala de iGosa leNkcazelo laneliseke ukuba umfaki sicelo unikezele ngayo yonke inkcazelo eyimfuneko.

iGosa Lenkcazelo Eliyintloko liza kusiqwalasela isicelo lize lithathe isigqibo ngokuba i-PPECB inayo na imvume ebhaliweyo yokunikezela ngenkcazelo eceliweyo.

Ukuba akukho mvume ebhaliweyo mayela nenkcazelo ecelwayo, i-PPECB iza kubhalela elo qela kucelwa inkcazelo yalo lize laziswe ukuba kufunyenwe isicelo kwaye kubuzwe kulo enoba zikhona na izingathu zokuba i-PPECB inganikezeli ngenkcazelo eceliweyo.

Kubalulekile ukuba ukufikelela kwiingxelo ezithile kungenzeka okanye kufuneka kungavunyelwa ngokusekelwe kwizizathu ezikuMthetho. Izizathu ezinyanzelekileyo zokungasamkeli isicelo ziquka, kodwa zingaphelelanga:

- Inkcazelo yokukhusela ubumfihlo bomntu;
- Ukukhusela inkcazelo yorhwebo kunye okanye inkcazelo eyimfihlo yeqela langaphandle;
- Inkcazelo esemagqwetheni ekhuselwa ngenxa yokuba iveliswe kwinkqubo yomthetho;
- Inkcazelo yorhwebo yase-PPECB;
- Inkcazelo yophando;
- Inkcazelo enokubeka ukhuseleko lomntu esichengeni;
- Inkcazelo ekusenokwenza ibeke esichengeni uqoqosho kunye nokuma kwezimali zeLizwe kunye nezinto zorhwebo ezenziwa ngamanye amashishini karhulumente;
- Inkcazelo malunga nendlela alawulwa ngayo amashishini karhulumente.

I-PPECB iza kuzihlola izizathu zokwala ukudlulisa inkcazelo ecelwa ngumthengi kunye/okanye iqela lesithathu ngokwe-PAIA ize ijonge enoba zikhona na izizathu ezichazwe ngasentla nezichazwe kuMthetho ezikuvumelayo ukuba ingakhutshwa inkcazelo eceliweyo.

Emva koko, i-PPECB iza kwazisa umfaki sicelo kunye nomthengi okanye iqela lesithathu.

#### 14. IMALI EZA KUBHATALWA

Imali Yokufikelela iza kubhataliswa ngokuhambelana nemali ekuvumelekileyo ukuyibiza ukuze kuphunyezwe izicelo ze-PAIA ngoko umthetho .

| Into Ecelwayo | Ingcaciso   | Imali (R)   |
|---------------|---|---|
| 1             | Imali ebhatalwa ngumfaki sicelo ngamnye   | R100.00   |
|               | Ifotokopi eliphepha le-A4 ubukhulu  | R1.50<br>ngephepha<br>okanye<br>inxalenye yalo  |
|               | Ikopi eprintiweyo eliphepha le-A4 ubukhulu  | R1.50<br>ngephepha<br>okanye<br>inxalenye yalo  |
|               | Ikopi enokufundwa kusetyenziswa ikhompyutha kwi -<br>(i) Iflesh drayivu (umfaki sicelo uza kubonelela ngeyakhe)<br>(ii) I-Compact disc (CD):<br><ul style="list-style-type: none"> <li>• Ukuba ibonelelwa ngumfaki sicelo</li> <li>• Ukuba ibonelelwa kumfaki sicelo</li> </ul> | R40<br><br>R40<br>R60   |
|               | (i) Xa kubhalwa ingcaciso yemifanekiso, iphepha eliyi-A4 okanye inxalenye yalo<br>(ii) Ikopi yemifanekiso   | Inkonzo ezifunyanwa kubaboneleli bangaphandle ziza kuxhomekeka kuMboneleli wenkonzo               |
|               | Xa kubhalwa into eshicelelweyo, iphepha eliyi-A4 okanye inxalenye yalo  | R24   |
|               | Ikopi yento eshicelelweyo efakwe -<br>(i) Kwiflesh drayivu (umfaki sicelo uza kubonelela ngeyakhe)<br>(iii) I-Compact disc (CD):<br><ul style="list-style-type: none"> <li>• Ukuba ibonelelwa ngumfaki sicelo</li> <li>• Ukuba ibonelelwa kumfaki sicelo</li> </ul>             | R40<br><br>R40<br>R60   |
|               | Ukuze kukhangelwe kuze kulungiselelwe ingxelo eza kudizwa, ngeyure nganye okanye inxalenye yayo, ingaqukwanga iyure yokuqala efuneka ngokusengqiqweni ukuze kukhangelwe kuze kulungiselelwe<br><br>Iyonke ingadluli kwi   | R100<br><br>R300  |
|               | Idipozithi: ukuba kukhangelwa ngaphezu kweeyure ezi-6   | Isahlulo sesithathu sexabiso ngesicelo ngasinye sibalwe ngokumayela nento yesi-2 ukuya kweyesi-8. |
|               | Ukuposa, ukuthumela nge-imeyile okanye enye indlela yokuthumela nge-eletroniki  | Iindleko ezingqalileyo  |

#### Iphepha 18 kwayi 19

Isihloko Soxwebhu: Incwadi Yemiyalelo Ye-PAIA

Uhlobo: Yeyomntu Wonke

Uluhlu Lokusasaza: Amaqela Anomdla

Umhla: 26/01/2022

|  |  |                               |
|--|--|-------------------------------|
|  |  | zokuthumela,<br>ukuba zikhona |
|--|--|-------------------------------|

## 15. UKUFUMANEKA KWENCWADI

15.1 Le Ncwadi yenziwe yafumaneka ngezi lwimi zintathu zilandelayo ezisemthethweni-

- 15.1.1 IsiNgesi;
- 15.1.2 IsiBhulu;
- 15.1.3 IsiXhosa;

15.2 Ikopi yale Ncwadi okanye inguqulelo ehlaziyiweyo iyafumanek ngolu hlobo lulandelayo-

- 15.2.1 Kwiwebhusaythi ye-PPECB ku <https://ppecb.com/>
- 15.2.2 kwiofisi yekomkhulu lenkampani karhulumente ukuze ifundwe ngamaxesha aqhelekileyo omsebenzi;
- 15.2.3 kuye nabani na ofaka isicelo nasemva kokuhlawula imali ekufuneka ihlawulwe; kunye
- 15.2.4 nakuMlawuli Wenkcukacha xa kufakwe isicelo.

15.3 Kuza kuhlawulwa imali njengoko kuchazwe kwisihlomelo B seMithetho, ngefotokopi ye-A4 nganye yale Ncwadi.

## 16. UKUHLAZIYWA KWENCWADI

I-PPECB iza kuhlaziya le Ncwadi qho ngonyaka ukuba oko kuyimfuneko.

**Ikhutshwe ngu**

---

**Lucien Jansen**  
**Igosa Eliphethe Inkampani**